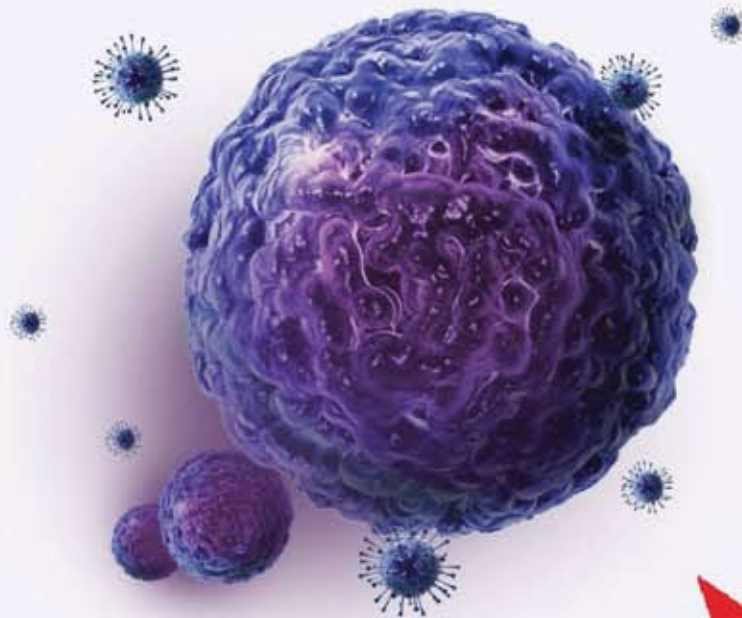


Current Concepts & Research Areas in Diagnosis and Management of Tobacco Related Cancers



21 December 2016



GITAM Institute of Medical Sciences & Research
GITAM UNIVERSITY

Rushikonda, VISAKHAPATNAM – 530 045. (A.P. India)

Phone: 0891-2866 450, 2538 444; Fax: 0891-2538444 E-mail: principal_gimsr@gitam.edu

Web site: www.gimsr.gitam.edu

About GITAM Institute of Medical Sciences & Research:

GIMSR was established by GITAM University to provide quality medical education of global standards. The University, as part of its social responsibility is also running the state of the art multi specialty hospital to provide quality health care facilities to the people at affordable cost. The hospital is designed for a patient friendly ambience to accommodate 850 beds with 20 operation theatres and over 100 ICU beds. In a short span of time, the medical facilities are well applauded by the professionals as well as public at large. The Hospital is within the reach of both the urban and rural population and known for its quality patient care. It is well connected with public and private transport facility. Presently, besides having the following broad specialties like Internal Medicine, General Surgery, Obstetrics, Gynecology, Orthopedics, Ophthalmology, Pediatrics, Dermatology, ENT, Radiology, Anesthesia, Psychiatry, Pulmonology, Physiotherapy, super specialty services like Urology, Plastic surgery neuro surgery, maxillofacial surgery are also available. The well equipped emergency medicine and trauma department is serving round the clock. The Intensive care units are well equipped with monitors, ventilators and other supportive systems. The well established central clinical laboratories of Pathology, Microbiology and Biochemistry are available. 24 X 7 Blood bank services are available to support emergency conditions. The Medical College adjacent to the Hospital is robustly equipped with all modern teaching and training facilities of international standards. Competency based medical education is being offered through need based curriculum, problem based learning, periodic objective assessments, student friendly laboratories, e-classrooms, digital library, air-conditioned auditorium, research laboratories and clinical trial units are all designed on par with the most advanced global institutions. Modern hostel accommodation, with excellent facilities, is available for boys and girls separately.

About Cancer Diagnosis & Management:

Cancer etiology lies in a genetically predisposition modified with environmental exposure. Around one third of cancer deaths are due to behavioral and dietary risks: high body mass index, low fruit and vegetable intake, lack of physical activity, tobacco use, alcohol use. Tobacco use is the most important risk factor for cancer causing around 20% of global cancer deaths and around 70% of global lung cancer deaths. Cancer causing viral infections such as HBV/HCV and HPV are responsible for up to 20% of cancer deaths in low- and middle-income countries. It is expected that annual cancer cases will rise from 14 million in 2012 to 22 within the next 2 decades. Therefore, prevention is a better strategy. The art of it basically sits on understanding etiology, epidemiology, mechanism and the genetics, racial and geographic variability.



ANDHRA PRADESH MEDICAL COUNCIL

2nd Floor, Dr. N.T.R. University of Health Sciences, VIJAYAWADA - 520 008, A.P.

Dr. YALAMANCHILI RAJA RAO
CHAIRMAN

K. SATYANARAYANA MURTY
REGISTRAR

APMC/CME/224/2016

14.11.2016

The Principal,
Gitam Inst. of M S & R
Gitam University,
Visakhapatnam.

Sir,

I am glad that the Gitam Institute of Medical Sciences & Research is organizing a regional one day CME on 21.12.2016 on " Current concepts & Research Areas in Diagnosis and Management of Tobacco Related Cancers" at Gitam Institute Medical Sciences & Research, Vizag. The AP Medical Council is awarding accreditation of 2 CME Credit Hours for these programme.

I convey my best wishes on behalf of AP Medical Council for the memorable success of the programme.

With regards,

Yours sincerely,

(Dr. Yalamanchili Raja Rao)
Chairman, APMC

"Attested"

(K. Satyanarayana Murty)
Registrar, APMC
REGISTRAR
Andhra Pradesh Medical Council
Dr. NTR UHS Buildings
VIJAYAWADA-520 004,



Ph : 0866-2455280, 2455281

E-mail : apmedicalcouncil@gmail.com

Website : www.apmconline.in

COMPLIANCE REPORT

CURRENT CONCEPTS & RESEARCH AREAS IN DIAGNOSIS AND MANAGEMENT OF TOBACCO RELATED CANCERS

- 1) The program started with the inauguration of scientific session by the chief guests Dr. Vamsidhar Velcheti and Prof. M. S. Prasada Rao (Vice Chancellor - GITAM University).
- 2) The first lecture was delivered by Dr. N. Sujatha on the “Epidemiology of risk factors and markers of Tobacco Related Cancers”.
- 3) It was followed by a talk on the “Tobacco related Cancers: Way Ahead” by Dr. D. Raghunatha Rao.
- 4) Next, Dr. S.P. Rao had given an insight on “What are Risk Factors & Biomarkers: Over View. Biomarkers in Diagnosis of Diseases: Limitations and Advantages”.
- 5) Later, Dr. R. Satyanarayana had elaborated on the “Research trends in Lung Cancer Stem Cells”.
- 6) Then an insight was given on the “Management of Lung Cancer in low resource settings” by Dr. K. C. Patro.
- 7) After lunch, Dr. Vamsidhar Velcheti had briefed on “What next in cancer Immunotherapy”.
- 8) Then an insight was given on “Palliative Therapy in Oncology” by Dr. Vidya Viswanathan.
- 9) At the end, a group discussion is held on “Identifying Research needs in Cancer Diagnosis: Discussion & Group work” for all the delegates.
- 10) Finally the delegates from each group have made presentation of ideas and formulated a Research protocol.
- 11) A total number of 125 delegates have registered and attended the CME program.



Dr. U.S.N. Murthy
(Observer - AP Medical Council)



Patient First

CURRENT CONCEPTS & RESEARCH AREAS IN DIAGNOSIS AND MANAGEMENT OF TOBACCO RELATED CANCERS

21st December 2016





This certificate is presented to Dr. P. HEMA PRAKASH KUMARI

Faculty in the department of MICROBIOLOGY who

attended the workshop as delegate/ resource person. This CME is awarded 2 credit hours by APMC (vide APMC letter dt APMC/CME/224/2016 Dt. 14.11.2016)


Organizing Chairman


Organizing Secretary


Chair - Scientific


Chairman - APMC


Secretary - APMC

CURRENT CONCEPTS & RESEARCH AREAS IN DIAGNOSIS AND MANAGEMENT OF TOBACCO RELATED CANCERS



CURRENT CONCEPTS & RESEARCH AREAS IN DIAGNOSIS AND MANAGEMENT OF TOBACCO RELATED CANCERS





Patient First